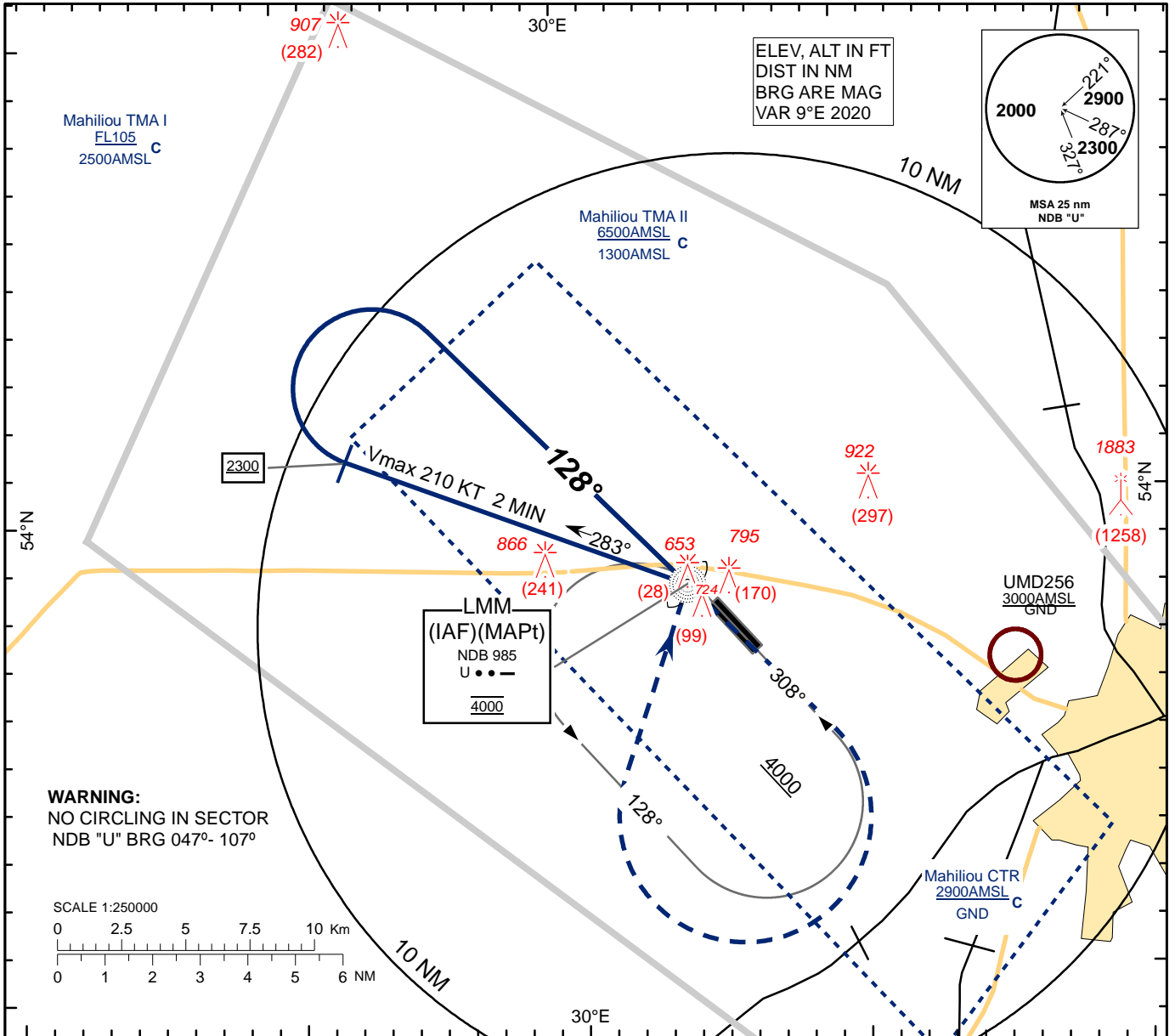


**INSTRUMENT  
APPROACH  
CHART - ICAO**

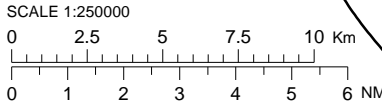
AERODROME ELEV 637  
HEIGHTS RELATED TO  
THR RWY 13 - ELEV THR 625

TWR 127.100  
MET 118.075 (EN)  
126.200 (RUS)

**MAHILIOU  
NDB  
RWY 13**

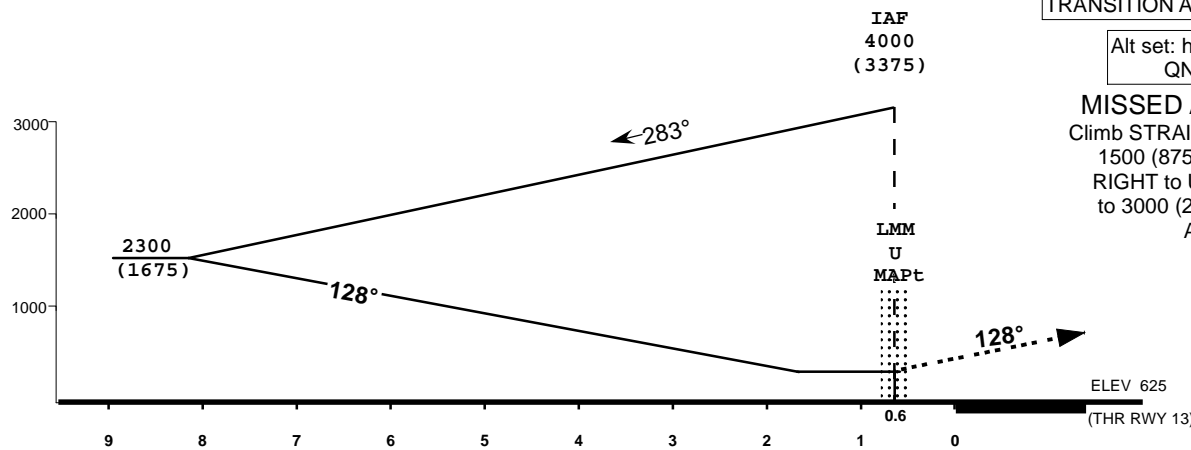


**WARNING:**  
NO CIRCLING IN SECTOR  
NDB "U" BRG 047°- 107°



TRANSITION ALTITUDE: 6000  
Alt set: hPa (mm on req)  
QNH (QFE on req)

**MISSED APPROACH**  
Climb STRAIGHT AHEAD to  
1500 (875) or above, turn  
RIGHT to U NDB climbing  
to 3000 (2375) and follow  
ATC instructions



CHANGES: New chart.

Aircraft Category		A	B	C	D
Straight-in Approach OCA(H)	NDB U no FAF	1090 (470)			
Circle - to - land		1100 (460)	1130 (500)	1260 (630)	1330 (690)

MAHILIOU  
NDB  
RWY 13

**AERONAUTICAL DATA TABULATION**

<b>NDB approach to RWY13 from U NDB</b>	
<b>Fix/point</b>	<b>Coordinates</b>
(TP) U BRG 283° V 210KT 2 MIN	540108N 0295206E
(IAF, MAPt) U LMM	535817.9N 0300405.8E
THR RWY 13	535749.61N 0300451.08E